



Redwood County Connection



Vol. 4, No. 2

The Official Newsletter of Redwood County

Fall Edition 2023

COUNTY HOSTS RIBBON CUTTING CEREMONY FOR NEW JUSTICE CENTER

The Redwood County Justice Center is now open! On August 22nd, the Redwood County Board of Commissioners hosted a ribbon cutting ceremony and open house to celebrate our newly constructed Justice Center. Employees and residents were able to take a tour of the Justice Center and adjacent Government Services Building. During the walkthrough, they were able to learn more about all of the services each building has to offer our patrons.

One of the greatest improvements our new Justice Center provides is better security throughout the building and perimeter. The design of the facility includes a centralized screening checkpoint upon entrance. Other security measures include separate entrances and exit points for Court Administration and County Attorney personnel, secure holding areas for detainees, and an underground tunnel to safely transfer inmates between the Law Enforcement Center and Justice Center.



The Commissioners are proud of the new facility and are confident it will serve the residents of Redwood County for many years.

Redwood County Government Services 302 East Third Street, Redwood Falls



Redwood County Justice Center 250 South Jefferson Street, Redwood Falls



CYBER SECURITY AWARENESS

*By: Paul Parsons,
Technology Director*

October is Cyber Security Awareness month and what better opportunity to promote the importance of cyber security awareness. In 2021, Americans paid over \$6.9 billion for cyber related crimes and \$10 billion in crimes reported in 2022. Understanding and being cyber savvy is necessary for everyone these days, not just in the workplace – but at home too. As the Information Technology Director, my team and I are tasked with ensuring Redwood County as an entity and our employees are educated and equipped with tools to aid in preventing cyber threats.

Below are some good practices to help combat cyber threats.

1. Use strong passwords or a password manager.
 - o Make your password long and contain all four-character types (upper case, lower case, special character, & number). The longer the better, as a simple password can take a hacker a micro-second to attack.
 - o Use a long phrase and include the four-characters, like ILoveReadingThisNew\$Letter2Day
 - o Change your password often. If you feel you have been a victim of some cyber-attack, change your password immediately.
2. SLOW DOWN when using email.
 - o When reading an email pay close attention to spelling, punctuation, and the urgency of the email.
 - o Don't get caught up and curious when spam or phishing email is pressuring you into something. Often, the hacker will put you under pressure you to comply by clicking a link.
 - o If an offer is too good to be true, it is most likely a threat. Such as a \$300 widget only costs \$5? This is a red flag! Pause and reevaluate the content.
 - o Hackers will use email addresses or website links that appear to be legit, however are not. Before clicking, hover your mouse over the link to view the full website or domain. If there are odd characters or additional words listed, it is likely a threat and you should not click on the link.
3. Turn on multifactor authentication (MFA)
 - o MFA is a tool to ensure it is truly you logging into your account and adds a layer of security when accessing sensitive information. This may be done by texting, calling or emailing you a code to authenticate. Most online Banking offers MFA when accessing banking information online. If you are not sure if this is an available feature, contact your bank.
 - o If your hosted email provides MFA, use it.
4. Update your devices, such as a smart phone, PC, smart TV, or tablet.
 - o Ensure your PC, cell phone, and other devices are updated regularly by going to your settings and checking for updates. If you currently have Windows 7 on your home computer, the Operating System is no longer supported as of 2020 and security updates are no longer being applied to your PC.

- o Stay current with Technology related updates.
5. Don't provide personal information.
 - o NEVER GIVE OUT PERSONAL INFORMATION, such as a credit card, social security number, driver's license, date of birth or address. This is a path to collect specific information about you and could create a cyber or identity threat.
 - o No bank, Department of Revenue or IRS will call you requesting your bank account information.
 - o Remember, if it sounds too good to be true, it is.
 6. Where do I go for more information?
 - o <https://www.cisa.gov/resources-tools/resources>
 - o <https://www.sans.org/security-resources/>

If you were to receive an email, text, phone call that just does not sound right, contact a trusted resource before falling victim of a cyber threat.

2024 CAMPING SEASON

reservations open

WALNUT GROVE, MN

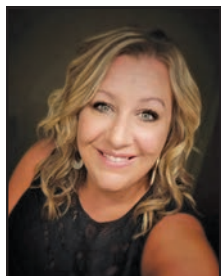
January 9, 2024 at 10 a.m.

STAY INFORMED

sign up for EMAIL NOTICES

- ☒ Redwood County News
- ☒ Public & Official Notices
- ☒ Career Opportunities
- ☒ Plum Creek Park News
- ☒ EDA News

redwoodcounty-mn.us



ECONOMIC DEVELOPMENT STRATEGIC PLAN ADOPTED

*By: Briana Mumme, Economic
Development Coordinator*

This past year, the Redwood County Economic Development Authority (EDA) underwent strategic planning and this spring adopted a two-year Strategic Plan. During the planning process one-on-one interviews were conducted, focus groups were held and a countywide survey was issued. Through these activities four priorities were identified as the best ways for the EDA to catalyze business retention and economic growth.

1) **Workforce:** Redwood County is comprised of a diverse business sector, with employment opportunities in many industries. Over half of the workforce is supported by private companies, followed by Government, not-for-profit and self-employed organizations. Workforce scarcity is seen as a key impediment to business growth. Unless workforce challenges are addressed, the County will continue to see employers competing for employees between each other and/or delaying growth plans. Additionally, recruitment of new businesses will be limited. To address this need, the EDA will provide resources to new and existing businesses through workforce attraction and retention tools.

2) **Housing:** Housing is instrumental in economic & community development; businesses may struggle to retain and recruit employees without a housing supply that meets the needs and preferences of the population. Further, if employees are unable to find housing near their place of employment, they may choose to live and work elsewhere. This was identified as a concern among Redwood County stakeholders. Concerns were not only related to availability and affordability, but also to the quality of current stock. Stakeholders suggested that the EDA may be able to better assist communities by understanding the current housing situation across the county and working with stakeholders to address housing needs.

3) **Broadband:** In 2021 the EDA prioritized the need to facilitate the buildout of broadband infrastructure for the county. Significant progress emerged through these efforts including successfully attaining grants and partnering with internet service providers. Continuing to move these efforts forward to ensure all residents and businesses have access to affordable, reliable internet.

4) **Child Care:** Child care availability and affordability continues to be a concern, with many stakeholders noting that child care is a main factor in workforce attraction and retention. Although many activities have been undertaken, beginning in 2017, to help address child care capacity, many challenges remain. It is important the EDA stays engaged in supporting child care access and affordability.

The work of the EDA expands beyond the specific priorities identified within the strategic plan. Assisting entrepreneurs and businesses with access to financial and technical support, strengthening leaders through LINC Redwood County, and

working to market and promote Redwood County as a place for businesses and entrepreneurs to flourish will continue.

The EDA will be intentionally focusing on the 2023-2025 strategic goals and objectives to position the County for the future by addressing key barriers to success in catalyzing business retention, job creation, and economic growth. Through partnerships, the EDA will help ensure that Redwood County is recognized as a premier place for businesses, communities and residents to thrive.

If you are interested in learning more or viewing the strategic plan visit redwoodcountyeda.com, call Briana Mumme, Economic Development Coordinator at (507) 637-1122 or email Briana_m@co.redwood.mn.us.

Department of Motor Vehicle VETERAN BENEFITS

VETERAN DESIGNATION ON DRIVER'S LICENSE

effective August 1, 2023

Veteran designation on driver's licenses has expanded to include retired members of the National Guard or reserve component of the U.S. Armed Forces. Note applicants must provide one of these documents:

- Certified copy of Honorable Discharge
- General Discharge under Honorable conditions
- Military Retiree ID Card
- Veteran ID card
- Veteran Health ID card

FREE DRIVER'S LICENSE OR ID FOR TOTAL-SERVICE CONNECTED DIABILITY VETERANS

effective January 1, 2024

Veterans with total-service connected disability can receive a FREE driver's license or ID *and* are exempt from any filing or credential fee or surcharges. Note applicants must provide documentation from one of following:

- Dept. Veterans Affairs
- U.S. Veterans Affairs
- Retirement Board of any U.S. Military branch attesting the 100% service connected disability rating

**LEARN
MORE!**



(507) 637-4029



Redwood County Government Center
403 South Mill Street, Redwood Falls



redwoodcounty-mn.us



Welcome K9 Echo

By: Sheriff Jason Jacobson

Sheriff Jason Jacobson is happy to announce the addition of K9 Echo to the patrol unit!

Reinstating the K9 program was a priority for the department and this spring I was approached by McDonough K9 with a generous offer to do so. McDonough K9 is owned by Mark McDonough, a 32 year Retired Police Officer and Police K9 Handler for 22 years. The organization works with law enforcement agencies to provide trained dogs according to USPCA standards and with a focus on tracking, area and building searches, article search/evidence recovery and criminal apprehension.

Echo is from the Czech Republic, and is 1 ½ years old. He is a dual purpose German Shepherd trained to detect controlled substances and serve as a tracking/apprehension dog. Deputy Taft Anderson was selected as Echo's handler, and the duo will be participating in a 12-week training in the coming months.

The Sheriff's office worked with the elementary schools within Redwood County to help select a name for our new K9. The four names the children were able to vote for included: Echo, Egon, Red, and Rip. After the votes were tallied, Echo was the winner. Thank you to the school districts and students for participating!



We are grateful for the donation from McDonough K9, along with a grant from AKC Reunite and donation from AgCountry Farm Credit Service to support the Redwood County K9 Program. Deputy Anderson and K9 Echo will be hitting the streets later this fall! Watch for additional updates on the Redwood County Sheriff's Office Facebook page!



Plum Creek Park Wraps Up 2023 Camping Season

by Adam Kletscher, Park Ranger

Redwood County's premier county park – Plum Creek Park

had another great camping season!

Plum Creek Park is located just outside of Walnut Grove, home of the Laura Ingalls Wilder Museum and Pageant. Nestled on 215 acres of rolling prairie and mixed forest Plum Creek Park is home to some breathtaking views. You can take a walk on over three miles of hiking trails, rent a kayak or paddle board, or throw in a line and enjoy some fishing or a swim in Lake Laura, or dip your toes in Plum Creek. The campground features 64 RV campsites, 13 primitive sites and 6 spacious camper cabins.

As we wrap up another camping season, we had nearly 700 reservations, from 40 different states, four Canadian Provinces and even a family from France! It's so awesome to see an increase in the number of reservations and even more awesome

to see how far people are traveling to enjoy our beautiful park!

Camping wasn't the only thing keeping the park busy this summer. Many visitors enjoyed time on Lake Laura; playing Frisbee golf and walking our trails. Plum Creek Park also hosted a weekly volleyball league in the Lower Park, along with a busy Varsity softball and youth baseball seasons. We had nearly 20 softball games and over 30 youth baseball games with many double-headers each night. Our fields were buzzing with so many athletes and spectators.

Planning efforts across the Laura Ingalls Wilder Museum & Pageant are underway as the 50th anniversary of Little House on the Prairie is celebrated this next year! If you are planning to partake in any of the festivities or are already making summer plans - mark your calendar as online reservations for the 2024 camping season will open on Tuesday, January 9 at 10 am.



Learn more about Plum Creek Park at plumcreekpark.com and check out the great photo gallery!



Bond Issued for Road and Bridge Projects

by Anthony Sellner, PE, County Engineer

The Redwood County Highway Department experienced significantly changing road and bridge conditions throughout 2023.

There have been many questions as to why so many of the paved roadways deteriorated in the manner in which they did this past winter. Some folks speculate the cause was the oils used in construction or maintenance, others state the manner in

which the pavements were constructed or the amount of traffic on a given road. All of these factors varied with each road that experienced severe surface layer separation, also called delamination. On the 56 miles of roads that were milled and overlaid this year, the last pavement overlay on these routes was



between the years of 1982 to 2001, or 22 - 41 years ago.

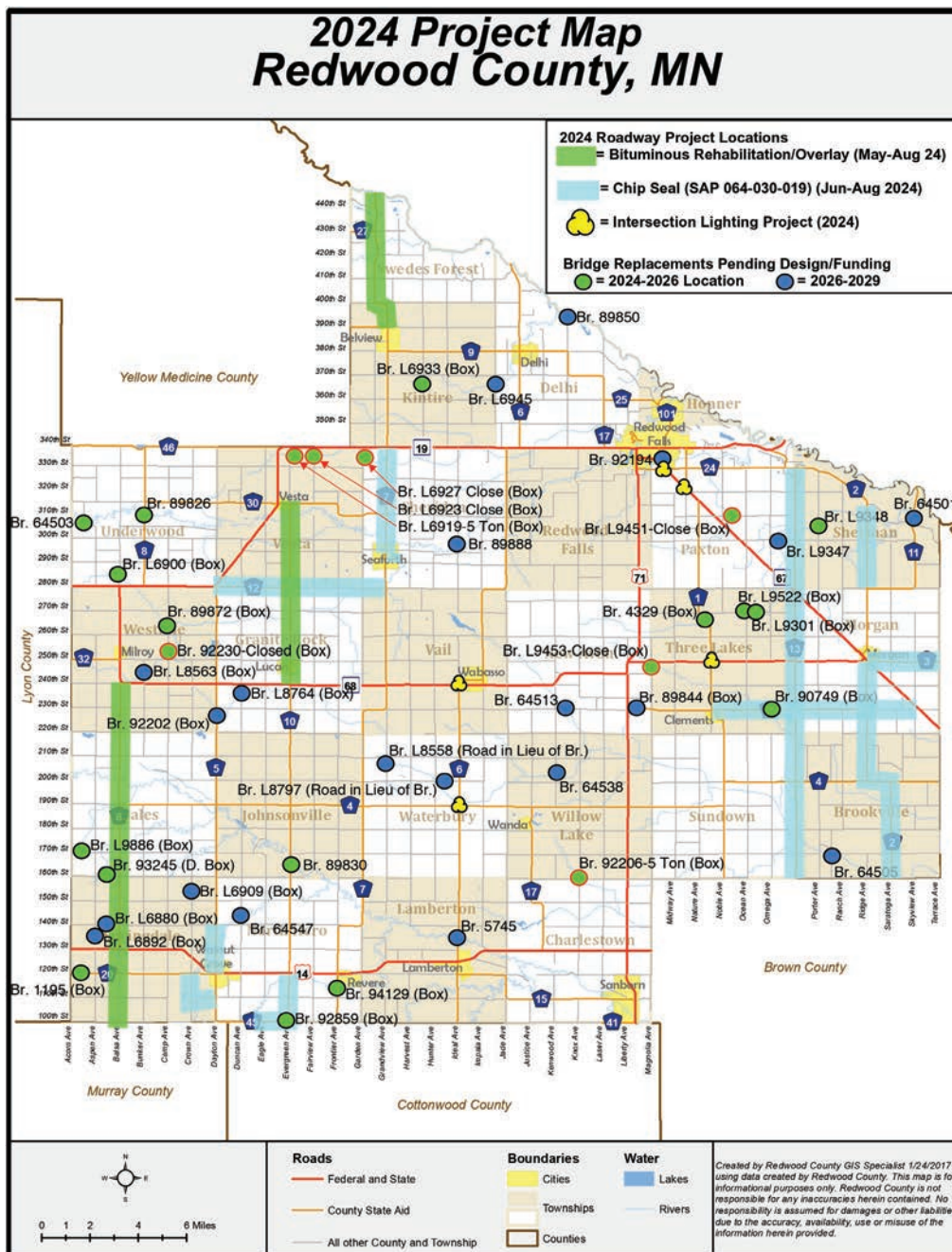
In order to understand this better, let's learn more about how a pavement ages. As an asphalt pavement ages, the sunlight oxidizes the oils and the pavement structure becomes brittle and unable to stick together. When it becomes brittle, the pavement can delaminate. As the pavement ages and oxidizes, it cannot stretch and contract as well with temperature changes. This causes additional cracking. Cracks will introduce additional, damaging moisture in and under the pavement layers, causing potholes. The combined effects of the delamination, cracks and moisture intrusion create a pavement structure that is susceptible to damage from the harsh Minnesota seasons.

In order to help provide a protective layer from the sunlight, asphalt roadways should typically be chip sealed every 7 years, and cracks should be sealed as soon as they develop. The typical life of an asphalt roadway is 20 years, at which time surface rehabilitation should occur in order to restore the upper layers of the pavement structure.

This information may spur a few more questions, such as why did our roads get up to 41 years old, and what in 2023 was different than previous years. As you recall, this past winter we experienced multiple freeze-thaw events and multiple rain and ice storms. When the pavements heated up, water infiltrated through cracks, potholes, and seeped through seal coats wherever holes existed. As the water re-froze, it degraded the bonds between the oils and aggregates within the pavement structure. Being the asphalt was already aged, oxidized and weakly holding together, it did not take much traffic impact in order to cause the layers to completely separate and strip apart. The newer oils in the chip seals held on tightly to the aged pavements below, and pulled up and off the old pavements, taking a thin layer with it. Additional traffic then caused further pavement delamination, as the highly oxidized and brittle layers below became exposed.

To answer the question, how did our pavements get as old as they are, we need to look at the existing state gas tax funds which pay for most of

continued on page 6



Road & Bridge Projects continued from page 5

the road maintenance, rehabilitation and reconstruction work. With 333 miles of paved roadway, we need to rehabilitate a minimum of 16.7 miles per year of road to ensure each road is overlaid every 20 years. With \$3.4M (Million) per year in State Aid Regular Construction allocation to fund road and bridge construction, and overlays ranging in cost between \$129,000 to \$646,000 per mile, depending on the complexity of the project and thickness of the new asphalt layer, there is not enough funds to cover the construction needs. The Highway Department was averaging 13 miles of paving per year, and was quickly falling further behind each consecutive year. This results in 3.7 additional miles of pavements falling into disrepair each year. Taken over a 15 year period, this would be 56 miles of our paved roads that have not received necessary rehabilitation. Ultimately, existing fund sources have not kept up with increasing costs to perform this work.

Redwood County needed to act quickly in order to save the existing pavements. A \$10M bond was sold for use on County Road and Bridge projects, which accounts for 7.7% of the total proposed County levy increase for 2024. This will be used to pay for the following projects:

- 2024 CSAH 8 Mill and Overlay from TH 14 to MN 68
- 2024 CSAH 7 Mill and Overlay from Belview to the North County line
- 2024 CSAH 10 Mill and Overlay from MN 68 to Vesta
- 2023 CSAH 2 Mill and Overlay from CSAH 11 to 305th Street
- 2023 CSAH 3 Mill and Overlay from Morgan to the East County line
- 2023 CSAH 4 Mill and Overlay from CSAH 6 to TH 71
- 2023 CSAH 5 Mill and Overlay from Walnut Grove to CR 52
- 2023 CSAH 7 Mill and Overlay from Seaforth to MN 19
- 2023 CSAH 10 Mill and Overlay from TH 14 to the South County line
- 2023 CSAH 12 Mill and Overlay from MN 19 to CSAH 7
- 2023 CSAH 16 Mill and Overlay from CSAH 1 to MN 68
- 2023 CSAH 45 Mill and Overlay from the South County line to CSAH 10
- 2024 County Road 78 Embankment Stabilization by Plum Creek Park
- 2023 County Road 52 Bridge/Box Culvert 93246 Replacement (local costs only)
- 2023 County Road 68 Bridge/Box Culvert 89893 Replacement (local costs only)
- 2024 County Road 51 Bridge 64503 Replacement (local costs only)

Over the next five years, we will complete an additional 77 miles of pavement rehabilitation projects, with \$25.7M in funding already secured. Despite all of the work that will be done over the next five years, there is still 49 miles of roadway needing rehabilitation which no funding currently exists for. This accounts for an additional \$17.5M of unfunded work, despite our continued efforts to apply for additional State and Federal funds. In addition, there are 73 bridges needing replacement over the next ten years at a cost of \$54M, in which we will pursue State and Federal Bridge bonds to cover a majority of the costs.

The Highway Department will continue to plan upcoming projects based on available **continued on page 7**

Bridge Replacements Key - Pending Design and/or Funding

● = 2024-2026 Location ● = 2026-2029 Location

2024-2026 Bridge List

1. Br. 64503 CR 51 (bidding)
2. Br. 89826 CSAH 8 (bidding)
3. Br. 90749 CSAH 16 (funds secured)
4. 92230 CR 57 (design TBD)
5. 92206 CR 67 (design TBD)
6. L6923 Vesta Fairview Ave (design TBD)
7. L6927 Sheridan Garden Ave (design TBD)
8. L9451 Paxton 310th St (design TBD)
9. L9453 Three Lakes Magnolia Ave (design TBD)
10. L6919 Vesta Evergreen Ave (design TBD)
11. L9301 Three Lakes 270th St (design in progress)
12. Br. 1195 CSAH 20 (design TBD)
13. Br. 89830 CSAH 10 (funds secured)
14. Br. 92859 CSAH 45 (design in progress)
15. Br. 94129 CSAH 7 (funds secured)
16. Br. 4329 CSAH 1 (design in progress)
17. Br. 89872 CR 57 (funds secured)
18. Br. 93245 CR 71 (funds secured)
19. L9522 Three Lakes 270th St (design in progress)
20. L6900 Underwood Balsa Ave (design in progress)
21. L9886 Gales 170th (design in progress)
22. L9348 Sherman Porter Ave (design in progress)
23. L6933 Kintire Harvest Ave (design in progress)

Target Year: 2024

Target Year: 2025-2026

2026-2029 Bridge List

24. L8558 Waterbury Grandview Ave (TBD construction year) (design in progress)
25. L8797 Waterbury 200th St (TBD construction year) (design in progress)
26. L6880 Springdale 140th St (TBD construction year) (design in progress)
27. L6909 Springdale Crown Ave (TBD construction year) (design in progress)
28. L6892 Springdale Aspen Ave (TBD construction year) (design in progress)
29. Br. 64505 Brookville Prairie Ave (2026) (design TBD)
30. Br. 89850 CSAH 17 Goldmine (design in progress) (2026)
31. Br. 64501 CSAH 11 (2026) (design TBD)
32. Br. 92202 CSAH 5 (2026) (design TBD)
33. Br. 64513 CR 70 (2026) (design TBD)
34. Br. 89888 CR 65 (2027) (design TBD)
35. L6945 Delhi Impala Ave (2027) (design TBD)
36. L8563 Westline Bunker Ave (2028) (design TBD)
37. L8764 Granite Rock Duncan Ave (2028) (design TBD)
38. 89844 CSAH 16 (design in progress) (2029)
39. 92194 CSAH 101 (design in progress) (2029)
40. 5745 CSAH 6 (2029) (design TBD)
41. Br. 64538 Willow Lake Kenwood Ave (TBD construction year) (design TBD)
42. L9347 Paxton 300th St (TBD construction year) (design TBD)
43. Br. 64547 North Hero Duncan Ave (TBD construction year) (design TBD)



In the Spring of 2023, this shows continued pavement failures on CSAH 10 south of Vesta. CSAH 10 received its last 3" overlay in 1995 and is scheduled for a mill and overlay in 2024. Once again, note all of the small and large holes forming in the chip seal, which will eventually delaminate and form pot holes.

Road & Bridge Projects continued from page 6

funding. Our five year plan on our webpage is intended to be flexible, recognizing road and bridge priorities may shift due to rapid changes in highway and bridge conditions, public input, goals, priorities and budget constraints.

If you ever have a question regarding our work at the highway department, please do not hesitate to call our office at 507-637-4056.



In the Spring of 2023, this shows initial pavement failures on CSAH 8 between MN 68 and TH 14. Note all of the small and large holes forming in the chip seal, which allows moisture intrusion and causes delamination during freeze-thaw cycles. CSAH 8 received its' last 1.5" mill and 3" overlay in 2005, and is scheduled for a mill and overlay in 2024.

RESIDENTIAL & BUSINESS RECYCLING CART SWAP-OUT

One of the exciting changes that will occur for 2024

By: Jon Mitchell, RRRSWA Executive Director

On January 1, 2024, the Redwood-Renville Regional Solid Waste Authority (RRRSWA) will begin the year by replacing ALL CURRENT West Central Sanitation (WCS) 96-gallon Residential and Business Recycling Carts, as well as ALL CURRENT 8-yard township residential recycling containers (located at all township recycling drop sites) with NEW 96-gallon carts and 8-yard containers. With the start of a new five (5) year contract between the RRRSWA and West Central Sanitation, these new recycling carts and containers will now be owned by RRRSWA. West Central Sanitation will continue to collect and haul Redwood and Renville County recyclables from residential, businesses, and township drop-off locations.

The new curbside carts will have the following characteristics:

- 96 - Gallon Capacity (same)
- NEW COLOR...grey with a yellow lid
- NEW QR Code, RECYCLING ONLY labels and ergonomic lids
- NEW RRRSWA identification and contact information will be stamped on the side

The new containers (dumpsters) placed at the rural sites will look like this:

- 8 - Cubic yard containers with sliding back door for an additional convenient access
- NEW COLOR...grey with yellow lids
- NEW LABELING QR Code sticker

and RECYCLING ONLY placed in clear view of the user

• NEW....

RRRSWA contact info

There will be no changes to the current list of recyclables accepted by the RRRSWA. The curbside recycling schedule will not see any changes, so you can continue to bring your cart to the curb as you have in the past. The schedule can easily be accessed by using the QR code, visiting our Facebook page, logging onto our website or calling us to request a paper copy.

REMINDER: IN THE FIRST THREE WEEKS OF JANUARY, ALL RECYCLING CARTS MUST BE SET OUT ON THEIR REGULARLY SCHEDULED DAY OF SERVICE. RESIDENTS WILL RECEIVE A NEW CART, WITH THE OLD CART BEING COLLECTED AT THE SAME TIME. THIS CART

REDWOOD
COUNTY
IS YOUR LOCAL
PASSPORT AGENT!



- ✓ Process new passport applications
- ✓ Provide you passport renewal paperwork & review before you submit
- ✓ Take your passport picture

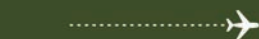
*no appointment
needed!*

redwoodcounty-mn.us



Redwood County
Government Center
Administration Office

403 South Mill Street,
Redwood Falls



☎ (507) 637 - 4016



MONDAY - FRIDAY
8 AM TO 4:30 PM

**SWAP WILL TAKE PLACE FROM
JANUARY 1 - 19, 2024.**

For more information:

1. Call (320) 523-8002 or (507) 637-1800
2. Visit: www.renvillecountymn.gov and click on the RRRSWA-solid waste link.
3. Visit: www.redwoodcounty-mn.us, click on Services and choose "Redwood/Renville Regional Solid Waste Authority".
4. Visit our Facebook page, "Redwood/Renville Regional Solid Waste Authority"



Redwood County Connection

Redwood County Government Center
403 S Mill St
PO Box 130
Redwood Falls, MN 56283

PRST STD
ECRWSS
US POSTAGE
PAID
PERMIT #20

Local Postal Customer

Page 8

The Official Newsletter of Redwood County

Fall Edition 2023

Contacts

Administration	637-4016
Assessor	637-4008
Attorney Office	637-4010
Auditor/Treasurer	637-4013
Court Administration	616-4018
Economic Dev.	637-1122
Emergency Mgmt.	637-4035
Environmental	637-4023
Extension	637-4025
Highway Dept.	637-4056
Human Services	637-4050
License Center	637-4029
Public Health	637-4041
Probation Office	637-4047
RRRSWA	637-1800
Recorder	637-4032
Restorative Justice	637-1139
Sheriff's Office	637-4036
Technology/IT	637-4016
Veteran's Office	637-4034

Commissioners

Rick Wakefield	859-2369
Jim Salfer	829-8029
Dennis Groebner	692-2235
Bob VanHee	616-1000
Dave Forkrud	430-1907

1. Open Camera on your smartphone
2. Scan Code (no need to take a picture)
3. Click on yellow bar/box



Jan 2024

S	M	T	W	T	F	S
	1	2	3	4	5	6
7	8	9	10	11	12	13
14	15	16	17	18	19	20
21	22	23	24	25	26	27
28	29	30	31			

Feb 2024

S	M	T	W	T	F	S
				1	2	3
4	5	6	7	8	9	10
11	12	13	14	15	16	17
18	19	20	21	22	23	24
25	26	27	28	29		

Mar 2024

S	M	T	W	T	F	S
					1	2
3	4	5	6	7	8	9
10	11	12	13	14	15	16
17	18	19	20	21	22	23
24	25	26	27	28	29	30
31						

Apr 2024

S	M	T	W	T	F	S
	1	2	3	4	5	6
7	8	9	10	11	12	13
14	15	16	17	18	19	20
21	22	23	24	25	26	27
28	29	30				

May 2024

S	M	T	W	T	F	S
					1	2
3	4	5	6	7	8	9
10	11	12	13	14	15	16
17	18	19	20	21	22	23
24	25	26	27	28	29	30
31						

Jun 2024

S	M	T	W	T	F	S
						1
2	3	4	5	6	7	8
9	10	11	12	13	14	15
16	17	18	19	20	21	22
23	24	25	26	27	28	29
30						



Curbside Schedule - Redwood County January - December 2024

Morgan-Clements-Sanborn-Wanda
RF Zone 1 - Morton - Franklin
Milroy-Walnut Grove-Revere-Lamberton-Lucan-Seaforth-Wabasso
RF Zone 2 - Vesta - Belview - Delhi
Holiday - No Service
Remainder of the week will be a day later



Plastic containers - #s 1, 2 & 5. **Must be removed from bags** - No Styrofoam, No bags, No toys, No pools, No siding, No PVC pipe, No pesticide containers, No herbicide containers



Steel and Aluminum - Food and beverage cans aluminum foil, pie pans and aerosol cans (must be empty). **No food remaining** - empty and clean. **No need to remove labels on food cans.**



Glass - *Single Use, clear, green and brown bottles and jars (food and beverage containers only.) No need to remove labels. **No light bulbs, mirrors, ceramics or dishes. Must be empty and clean. * Canning jars are not acceptable.**



Paper - Newspaper, junk mail, paperbacks, catalogs, phone books, envelopes (including windowed) and office paper. **Do Not bundle or tie** - place in cart loosely



Cardboard - (folded flat) Brown paper grocery bags, boxboard (cereal, cracker, pasta and shoe boxes) & paper egg cartons. **No frozen food or refrigerated food boxes. No beer or pop boxes (6 packs, 12 packs or cases) No packing foam. No waxed cardboard. No furnace filters.**

Plastic Bags/Film Plastic: Please purchase and utilize reusable grocery bags, ask for paper or have your groceries loaded loosely into your cart. **Do NOT place bags or other film plastic into your recycling container.**

Shredded Paper: Please utilize our shredding service, which is FREE for personal papers, nominal fee for businesses. **IF you shred your own paper, please bag it and bring it to the office located at the RRRMRF in Redwood Falls.**



Good Neighbors You've Come To Trust
4089 Abbott Drive • P.O. Box 796 • Willmar, MN 56201
1-800-246-7630 • FAX 320-235-5715
www.wcsanitation.com

PLEASE KEEP AND POST

Telephone:
(507) 637-1800
(320) 523-8002

Jul 2024

S	M	T	W	T	F	S
	1	2	3	4	5	6
7	8	9	10	11	12	13
14	15	16	17	18	19	20
21	22	23	24	25	26	27
28	29	30	31			

Aug 2024

S	M	T	W	T	F	S
					1	2
3	4	5	6	7	8	9
10	11	12	13	14	15	16
17	18	19	20	21	22	23
24	25	26	27	28	29	30
31						

Sep 2024

S	M	T	W	T	F	S
1	2	3	4	5	6	7
8	9	10	11	12	13	14
15	16	17	18	19	20	21
22	23	24	25	26	27	28
29	30					

Oct 2024

S	M	T	W	T	F	S
						1
2	3	4	5	6	7	8
9	10	11	12	13	14	15
16	17	18	19	20	21	22
23	24	25	26	27	28	29
30	31					

Nov 2024

S	M	T	W	T	F	S
						1
2	3	4	5	6	7	8
9	10	11	12	13	14	15
16	17	18	19	20	21	22
23	24	25	26	27	28	29
30	31					

Dec 2024

S	M	T	W	T	F	S
						1
2	3	4	5	6	7	8
9	10	11	12	13	14	15
16	17	18	19	20	21	22
23	24	25	26	27	28	29
30	31					