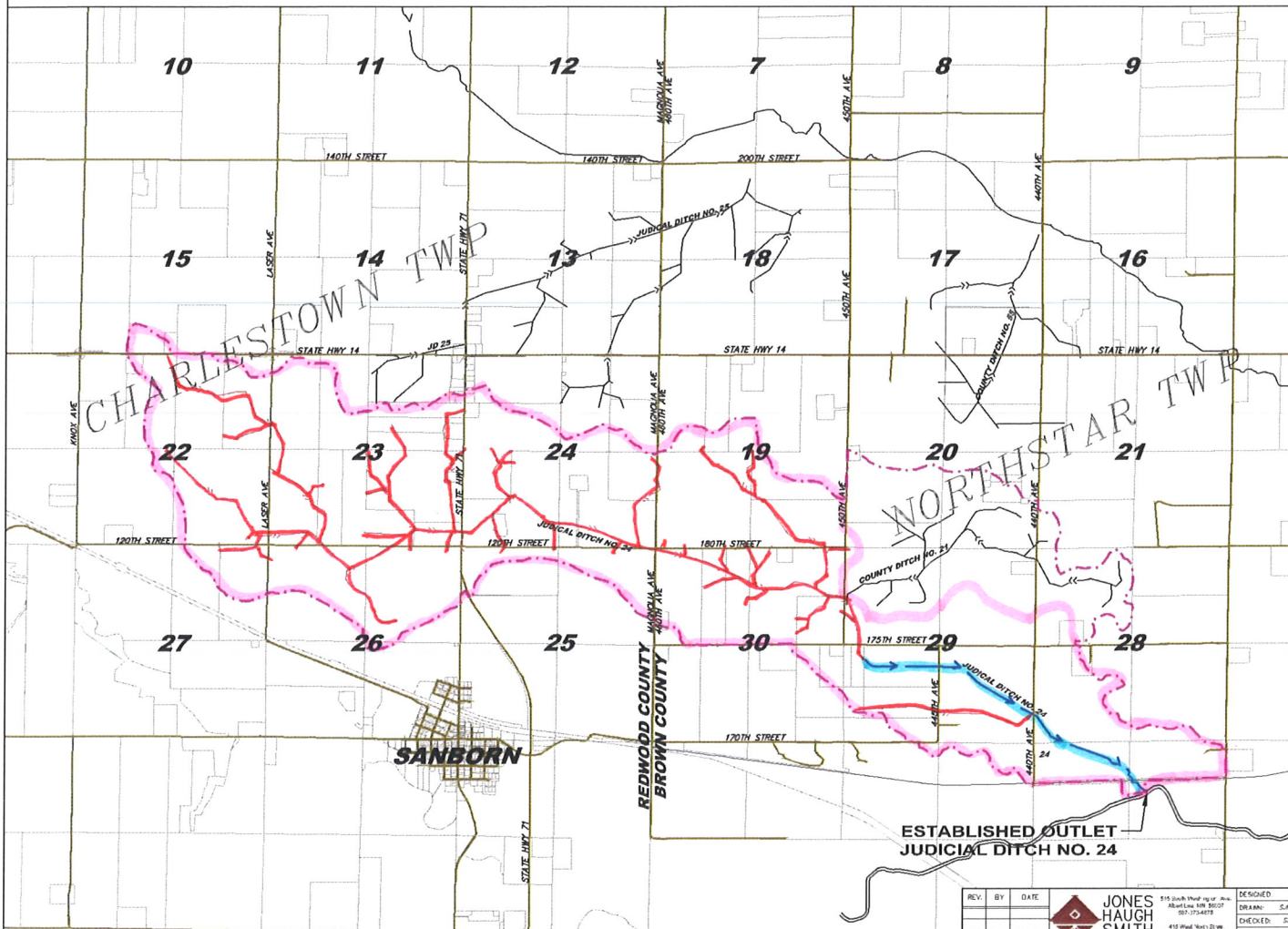


JUDICIAL DITCH NO. 24

REDETERMINATION OF BENEFITS & DAMAGES

BROWN & REDWOOD COUNTIES, MINNESOTA



INDEX TO SHEETS	
SHEET	SUBJECT
1	TITLE SHEET
2-3	WATERSHED MAP

LEGEND	
APPROXIMATE EXTERIOR WATERSHED	---
APPROXIMATE INTERIOR WATERSHED	---
APPROXIMATE ORIGINAL WATERSHED	---
EXISTING DITCH (Private)	---
LEGAL OPEN DITCH (Not Project)	---
PRIVATE OPEN DITCH	---
W.E. DITCH (Private)	---
LEGAL TIE DITCH (Not Project)	---
PRIVATE TIE	---
WATERWAY	---
NATURAL STREAM	---
CANAL	---
OVERHEAD ELECTRIC	---
UNDERGROUND TELEPHONE	---
CITY LIMITS	---
STATE HWY	---
COUNTY HWY	---
UNDERGROUND TELEPHONE	---
UNDERGROUND ELECTRIC	---
LIGHT POLE	---
POWER POLE	---

ABBREVIATIONS

JD	= JUDICIAL DITCH
CD	= COUNTY DITCH
JD	= JOINT COUNTY DITCH
WD	= WATERSHED DITCH
LAT	= LATERAL
SB	= SUBALLOT
PVT	= PRIVATE
POD	= PRIVATE OPEN DITCH
LW	= LATERAL
JD	= CROSSING
CU	= OUTLET



NO RESPONSIBILITY IS ACCEPTED FOR THE LOCATIONS OF UTILITIES SHOWN HEREON. VERIFICATION OF ACTUAL LOCATIONS SHOULD BE REQUESTED PRIOR TO THE COMMENCEMENT OF CONSTRUCTION OR THE TAKING OF ANY OTHER ACTION RELYING ON THE ACTUAL LOCATIONS. THE CONTRACTOR SHALL IMMEDIATELY NOTIFY THE ENGINEER OF ANY DISCREPANCIES OR VARIATION FROM PLAN.

LOCATIONS OF ALL UTILITIES SHOWN ARE APPROXIMATE. Gopher State One-Call: 1-800-252-1165

THE SUBSURFACE UTILITY INFORMATION IN THIS PLAN IS UTILITY QUALITY LEVEL D. THIS UTILITY QUALITY LEVEL WAS DETERMINED ACCORDING TO THE GUIDELINES OF C/ASCE 38-02, ENTITLED "STANDARD GUIDELINES FOR THE COLLECTION AND DEPICTION OF EXISTING SUBSURFACE UTILITY DATA."

COPYRIGHT
THIS DRAWING AND FORMAT ARE PROTECTED BY COPYRIGHT AND ALL RIGHTS ARE RESERVED. THE USE OF THIS DRAWING AND FORMAT IS STRICTLY PROHIBITED WITHOUT THE WRITTEN CONSENT AND PERMISSION OF JONES, HAUGH & SMITH INC.

I HEREBY CERTIFY THAT THIS PLAN, SPECIFICATION, OR REPORT WAS PREPARED BY ME OR UNDER MY DIRECT SUPERVISION AND THAT I AM A FULLY LICENSED PROFESSIONAL ENGINEER UNDER THE LAWS OF THE STATE OF MINNESOTA.

Steven J. Parkova
Lic. No. 43895 Date:

EXHIBIT A - DRAFT PLANS

BROWN & REDWOOD COUNTIES, MN
JUDICIAL DITCH NO. 24
REDETERMINATION OF BENEFITS & DAMAGES
TITLE SHEET

REV.	BY	DATE



JONES
HAUGH
SMITH
Engineers & Surveyors
615 South Third Street, Suite 200
St. Paul, MN 55102
651-224-4477
410 West North 12th Street
Owensboro, KY 40301
606-661-4008

DESIGNED	SJP
DRAWN	SJP
CHECKED	SJP
DATE	7-2020
FILE NO.	20-085 DMC

SHEET
1
OF
3