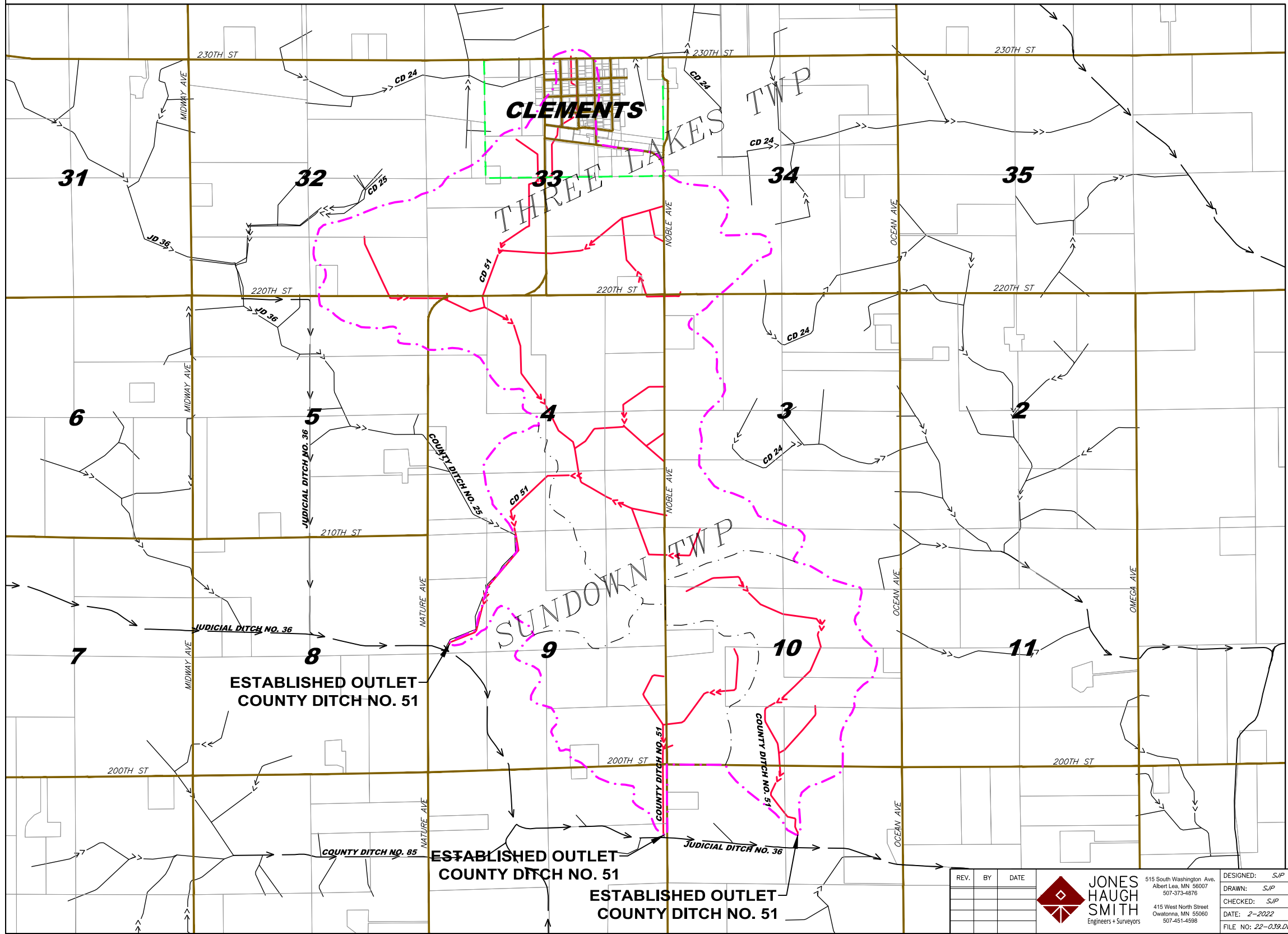


COUNTY DITCH NO. 51  
REDETERMINATION OF BENEFITS & DAMAGES  
REDWOOD COUNTY, MINNESOTA



INDEX TO SHEETS

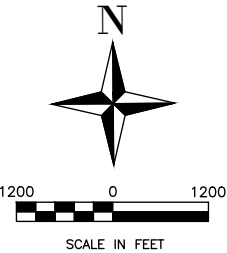
SHEET	SUBJECT
1	TITLE SHEET
2-3	WATERSHED MAP

LEGEND

APPROXIMATE EXTERIOR WATERSHED	---
APPROXIMATE INTERIOR WATERSHED	---
APPROXIMATE ORIGINAL WATERSHED	---
OPEN DITCH (Project)	---
LEGAL OPEN DITCH (Not Project)	---
PRIVATE OPEN DITCH	---
TILE DITCH (Project)	---
LEGAL TILE DITCH (Not Project)	---
PRIVATE TILE	---
WATERWAY	---
NATURAL STREAM	---
GAS LINE	---
OVERHEAD ELECTRIC	---
UNDERGROUND TELEPHONE	---
CITY LIMITS	---
FENCE LINE	---
TILE INLET	---
OVERHEAD TELEPHONE	---
FIBER-OPTICS	---
UNDERGROUND ELECTRIC	---
LIGHT POLE	---
POWER POLE	---

ABBREVIATIONS

JD = JUDICIAL DITCH
CD = COUNTY DITCH
JCD = JOINT COUNTY DITCH
MOD = MAIN OPEN DITCH
LAT = LATERAL
BR = BRANCH
PVT = PRIVATE
POD = PRIVATE OPEN DITCH
L/W = LOW-WATER
XG = CROSSING
OIL = OUTLET



NO RESPONSIBILITY IS ACCEPTED FOR THE LOCATIONS OF UTILITIES SHOWN HEREON. VERIFICATION OF ACTUAL LOCATIONS SHOULD BE REQUESTED PRIOR TO THE COMMENCEMENT OF CONSTRUCTION OR THE TAKING OF ANY OTHER ACTION RELYING ON THE ACTUAL LOCATIONS. THE CONTRACTOR SHALL IMMEDIATELY NOTIFY THE ENGINEER OF ANY DISCREPANCIES OR VARIATION FROM PLAN.

LOCATIONS OF ALL UTILITIES SHOWN ARE APPROXIMATE.  
GOPHER STATE ONE-CALL: 1-800-252-1166

THE SUBSURFACE UTILITY INFORMATION IN THIS PLAN IS UTILITY QUALITY LEVEL D. THIS UTILITY QUALITY LEVEL WAS DETERMINED ACCORDING TO THE GUIDELINES OF C/ASCE 38-02, ENTITLED "STANDARD GUIDELINES FOR THE COLLECTION AND DEPICTION OF EXISTING SUBSURFACE UTILITY DATA."

COPYRIGHT  
THIS DRAWING AND FORMAT ARE PROTECTED BY COPYRIGHT AND ALL RIGHTS ARE RESERVED. THE USE OF THIS DRAWING AND FORMAT IS STRICTLY PROHIBITED WITHOUT THE WRITTEN CONSENT AND PERMISSION OF JONES, HAUGH & SMITH INC.

I HEREBY CERTIFY THAT THIS PLAN, SPECIFICATION, OR REPORT WAS PREPARED BY ME OR UNDER MY DIRECT SUPERVISION AND THAT I AM A DULY LICENSED PROFESSIONAL ENGINEER UNDER THE LAWS OF THE STATE OF MINNESOTA.

Steven J. Penkava  
Lic. No. 43895 Date:

EXHIBIT A - DRAFT PLANS

REDWOOD COUNTY, MN  
COUNTY DITCH NO. 51  
REDETERMINATION OF BENEFITS & DAMAGES  
TITLE SHEET

SHEET  
1  
OF  
3

REV.	BY	DATE	 <b>JONES HAUGH SMITH</b> Engineers + Surveyors	515 South Washington Ave. Albert Lea, MN 56007 507-373-4876	DESIGNED: SJP
				415 West North Street Owatonna, MN 55060 507-451-4598	DRAWN: SJP
					CHECKED: SJP
					DATE: 2-2022
					FILE NO: 22-039.DWG